



abhishilp

Opp. Vahveshwar Mahadev temple,
Near keshavnagar hall, Vastrapur,
Ahmedabad - 15

Developers :
Sinhapatya Shilp Organisers
Phone : 754 6369, 754 6254
Fax : 079 - 754 6182

Architects :
Pandya Associates
Phone : 663 3666

abhishilp



Space for Elevation

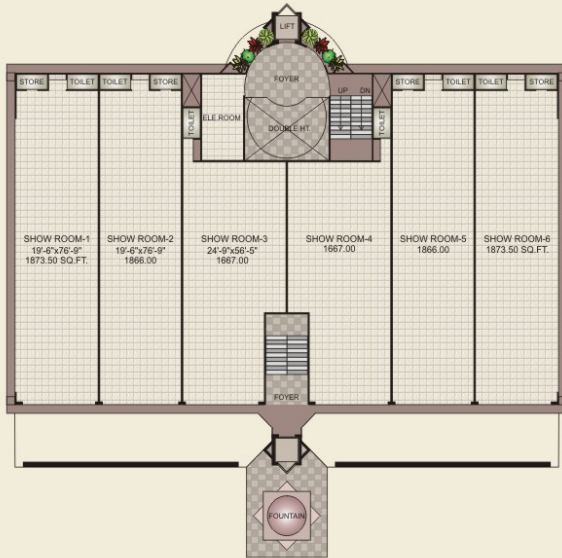
Introduction

A good ambience can pacify the mind & create a soothing effect; it can accentuate one's working capacities by inspiring higher thoughts.

Sanjay Sutaria, Dharmen Sutaria and Jigen Shah of Sarthav Infrastructures have created exactly that with their new project - Abhishilp. An aesthetically appealing elevation and classy interiors are just some of the outstanding features. A commercial jewel, with three open sides, Abhishilp also offers ample parking area.

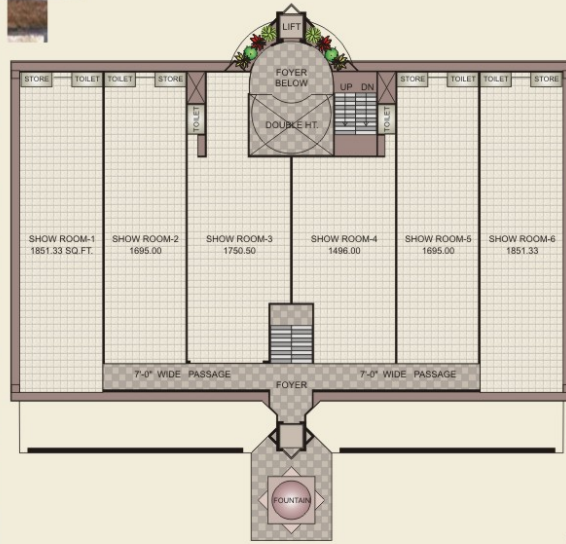
With rich experience as the backbone, the latest presentation of Sarthav Infrastructures is a blend of inspiring ambience & exclusive facilities.

Ground floor plan



100'-0" R O A D

first floor plan



100'-0" R O A D

Space for
Elevation

